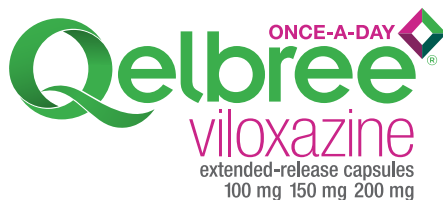


For children and teens with ADHD  
6 years of age and older

# Got ADHD?

Get in the know about nonstimulant



## IMPORTANT SAFETY INFORMATION

**Qelbree may increase suicidal thoughts and actions, in children and adults with ADHD, especially within the first few months of treatment or when the dose is changed. Tell your doctor if you or your child have (or if there is a family history of) suicidal thoughts or actions before starting Qelbree. Monitor your or your child's moods, behaviors, thoughts, and feelings during treatment with Qelbree. Report any new or sudden changes in these symptoms right away.**

Abbreviation: ADHD, attention-deficit/hyperactivity disorder.

Please see full [Important Safety Information](#) on pages 6 and 7.

## Finding the right ADHD medication can take time...

A recent survey of 11,000 caregivers and adults revealed that finding the **right ADHD treatment can be challenging**:

- It can be a frustrating period of trial and error
- The average child tries ~3 different medications
- Barely half of caregivers in this survey are satisfied with the duration of coverage for their child's current ADHD treatment

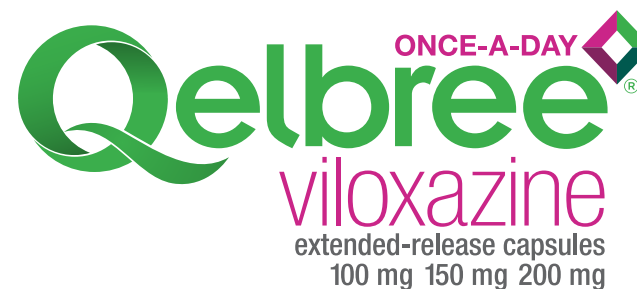
The ADHD drug shortage **is ongoing**:

- Shortages exist across the entire stimulant class
- Patients are enduring hours of phone calls and travel looking for pharmacies that can fill their prescriptions
- Patients are continuously calling their doctors for a new prescription when trying to find their medication at different pharmacies

Please see full [Important Safety Information](#) on pages 6 and 7.

For children and teens with ADHD 6 years and older

**Could it be time to transition to Qelbree?—a nonstimulant that works!**



You may have questions about your child's ADHD or ADHD symptoms. Use the attached guide to help have a conversation with your healthcare provider about what you may be observing so you can work together to discuss symptoms and appropriate ADHD treatment options.

### IMPORTANT SAFETY INFORMATION

**You should not take Qelbree if you or your child:**

Take a medicine for depression called a monoamine oxidase inhibitor (MAOI) or have stopped taking an MAOI in the past 14 days. Also, you or your child should avoid alosetron, duloxetine, ramelteon, tasimelteon, tizanidine, and theophylline.

## 1 On a typical day, which of these symptoms do you see in your child?

### ▼ Inattention

- Distracted easily
- Doesn't follow directions
- Loses track of time
- Can't stay focused to finish a task
- Loses things
- Forgets things

### ▼ Hyperactivity/Impulsiveness

- Fidgets and squirms instead of sitting still
- Interrupts others
- Can't play quietly
- Can't stay seated
- Talks a lot
- Struggles with bedtime routine

## 2 Which parts of the day are more challenging due to ADHD symptoms? (Check all that apply.)

- Morning
- During school
- After school/doing homework
- Dinnertime
- Bedtime

## 3 How do these affect your child? (Check all that apply.)

### ▼ Home

- Has trouble getting ready for school
- Misses the bus often
- Other

### ▼ School

- Gets notes sent home from teachers
- Struggles to complete tests and schoolwork
- Other

### ▼ Social settings

- Has trouble getting along with friends
- Has trouble following directions
- Loses interest in afterschool activities
- Other

Please see full [Important Safety Information](#) on pages 6 and 7.

For children and teens with ADHD 6 years and older

## Could it be time to transition to Qelbree?—a nonstimulant that works!

### Questions to ask your child's healthcare provider:

- 1 What is Qelbree and what makes it different?
- 2 How can Qelbree help with ADHD symptoms?
- 3 How long does medication coverage with Qelbree last?
- 4 What are the common side effects of Qelbree?
- 5 When should Qelbree be taken?
- 6 How should Qelbree be taken?
- 7 What else should I know about Qelbree?
- 8 Is there a Qelbree savings program?

### IMPORTANT SAFETY INFORMATION

**Qelbree can increase blood pressure and heart rate.** Your or your child's doctor will monitor these vital signs.

**Qelbree**<sup>®</sup> ONCE-A-DAY  
viloxazine  
extended-release capsules

## INDICATION

Qelbree is a prescription medicine used to treat ADHD in adults and children 6 years and older.

## IMPORTANT SAFETY INFORMATION

**Qelbree may increase suicidal thoughts and actions, in children and adults with ADHD, especially within the first few months of treatment or when the dose is changed. Tell your doctor if you or your child have (or if there is a family history of) suicidal thoughts or actions before starting Qelbree. Monitor your or your child's moods, behaviors, thoughts, and feelings during treatment with Qelbree. Report any new or sudden changes in these symptoms right away.**

### **You should not take Qelbree if you or your child:**

Take a medicine for depression called a monoamine oxidase inhibitor (MAOI) or have stopped taking an MAOI in the past 14 days. Also, you or your child should avoid alosetron, duloxetine, ramelteon, tasimelteon, tizanidine, and theophylline.

**Qelbree can increase blood pressure and heart rate.** Your or your child's doctor will monitor these vital signs.

**Qelbree may cause manic episodes in patients with bipolar disorder.** Tell your doctor if you or your child show any signs of mania.

**Do not drive or operate heavy machinery until you know how Qelbree will affect you or your child.** Qelbree may cause you or your child to feel sleepy or tired.

**The most common side effects of Qelbree** in patients 6 to 17 years are sleepiness, not feeling hungry, feeling tired, nausea, vomiting, trouble sleeping, and irritability, and in adults, insomnia, headache, sleepiness, tiredness, nausea, decreased appetite, dry mouth, and constipation. These are not all the possible side effects of Qelbree.

You are encouraged to report negative side effects of prescription drugs to the FDA. Visit [www.fda.gov/medwatch](http://www.fda.gov/medwatch) or call 1-800-FDA-1088.

Please see [Medication Guide](#), including Boxed Warning.



## Qelbree—a nonstimulant ADHD treatment that works!

### What is Qelbree?



**Qelbree** is a once-a-day nonstimulant ADHD medication that offers full-day medication coverage.



**Qelbree** is proven in medical studies to effectively and safely\* help reduce ADHD symptoms in adults and children 6 years and older.

\*Important: Monitor for mood or behavior changes. Your child's doctor should also monitor for changes in blood pressure and heart rate.



**Qelbree** has been proven effective in 3 medical studies of children and teens 6 to 17 years of age who have been diagnosed with ADHD. Some children took a single daily dose of Qelbree; others took placebo.



An 18-point rating scale was used in all studies to measure the reduction of symptom scores each child had from the beginning of the study to the end of the study.



**Qelbree** met the goal of the 3 medical studies—a significant reduction in ADHD symptom scores in 6 or 8 weeks. For some children, Qelbree reduced ADHD symptom scores as early as week 1.

#### IMPORTANT SAFETY INFORMATION

**Qelbree may cause manic episodes in patients with bipolar disorder.** Tell your doctor if you or your child show any signs of mania.

Please see full [Important Safety Information](#) on pages 6 and 7.



**Qelbree** is not a stimulant.

- There is no evidence of abuse or misuse
- Since Qelbree is not a scheduled medicine, samples are available to help start treatment



**Qelbree** can be conveniently refilled without the need for new prescriptions each month.

- It's important to keep scheduled follow-up visits, where your child's doctor will:
  - Monitor vital signs and weight
  - Talk to you or your child about how the medication is working and adjust your child's medication dose if needed



Learn about the **Qelbree** savings program on page 16.



easily refillable

All photos within this brochure are patient portrayals.

**Qelbree** ONCE-A-DAY  
viloxazine  
extended-release capsules

## Qelbree—a nonstimulant ADHD treatment that works!



manageable side effects—when taken as directed

### Is Qelbree safe?



**Qelbree** has been proven safe\* and effective in 3 medical studies for the treatment of ADHD in children and teens 6 to 17 years of age.

\*Important: Monitor for mood or behavior changes. Your child's doctor should also monitor for changes in blood pressure and heart rate.



A low incidence of side effects was seen in **Qelbree** in the medical studies. Most of these side effects did not lead to stopping treatment with **Qelbree**.

- Only 3% of children or teens taking **Qelbree** discontinued taking **Qelbree** in the medical studies due to side effects (compared to 1% taking placebo)



**Qelbree** is a nonstimulant, which means it is not a narcotic or a controlled medication

- There is no evidence of abuse

**Qelbree** is unlikely to have negative interactions with stimulants like methylphenidate or amphetamines.

#### Most common side effects

Side effect	Placebo	Qelbree
Somnolence (drowsiness) <sup>†</sup>	4%	<b>16%</b>
Decreased appetite	0.4%	<b>7%</b>
Tiredness	2%	<b>6%</b>
Nausea	3%	<b>5%</b>
Vomiting	2%	<b>4%</b>
Trouble sleeping <sup>‡</sup>	1%	<b>4%</b>
Irritability	1%	<b>3%</b>

<sup>†</sup>**Somnolence:** somnolence, lethargy (lack of sleep), sedation.

<sup>‡</sup>**Trouble sleeping:** initial insomnia, insomnia, middle insomnia, poor quality sleep, sleep disorder, terminal insomnia.

#### IMPORTANT SAFETY INFORMATION

**Do not drive or operate heavy machinery until you know how Qelbree will affect you or your child.** Qelbree may cause you or your child to feel sleepy or tired.

Please see full [Important Safety Information](#) on pages 6 and 7.



## Qelbree—a nonstimulant ADHD treatment that works!

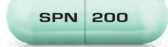
### How is Qelbree taken?



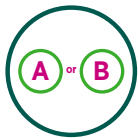
- **Qelbree** is taken once a day, any time of day (AM or PM)
- **Qelbree** offers rapid- and extended-release, full-day medication coverage



- **Qelbree** is available in 3 easy-to-remember dosage strengths. Your child's doctor will work with you to find the right strength for your child



Capsules shown are not actual size.



- **Qelbree** can be taken 2 ways:
  - The capsule may be swallowed whole. Do not cut, crush, or chew the capsules
  - The capsule may be opened and its entire contents sprinkled onto a spoonful of pudding or applesauce. Consume the entire mixture, without chewing, within 15 minutes if mixed with pudding, or within 2 hours if mixed with applesauce; do not store for future use



dosing that's

adaptable

**Qelbree** is the only nonstimulant ADHD treatment that can be sprinkled on food to meet the needs of those children, teens, or adults unable to swallow capsules.



Capsule\*

—OR—



Sprinkled on pudding or applesauce\*

Capsules shown are not actual size.

\*Your child's doctor will determine the dose based on your child's response to medication.

#### IMPORTANT SAFETY INFORMATION

The most common side effects of **Qelbree** in patients 6 to 17 years are sleepiness, not feeling hungry, feeling tired, nausea, vomiting, trouble sleeping, and irritability, and in adults, insomnia, headache, sleepiness, tiredness, nausea, decreased appetite, dry mouth, and constipation. These are not all the possible side effects of Qelbree.

Please see full [Important Safety Information](#) on pages 6 and 7.

**Qelbree**<sup>®</sup> ONCE-A-DAY  
viloxazine  
extended-release capsules



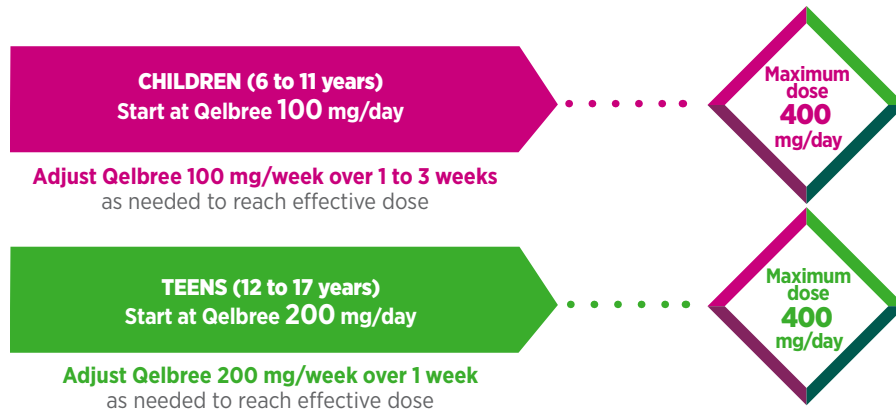
## Qelbree—a nonstimulant ADHD treatment that works!

### How is Qelbree dosed?



Qelbree is taken once a day, any time of day (AM or PM)

The dose of Qelbree may be increased weekly as needed to optimize ADHD symptom control\*



\*Your child's doctor will determine the dose based on your child's response to medication.

#### IMPORTANT SAFETY INFORMATION

**You should not take Qelbree if you or your child:**

Take a medicine for depression called a monoamine oxidase inhibitor (MAOI) or have stopped taking an MAOI in the past 14 days. Also, you or your child should avoid alosetron, duloxetine, ramelteon, tasimelteon, tizanidine, and theophylline.

Please see full [Important Safety Information](#) on pages 6 and 7.



Reaching your child's best daily dose of Qelbree may be a transition.

Stick with the treatment plan to ensure your child has an opportunity to reach their most effective dose.

Speak with your healthcare provider about a follow-up plan and when to check in on your child's progress or need for dose adjustment. Discuss options with your child's healthcare provider before stopping treatment. It may take some time and adjustment to find your child's ideal daily dose.

**Qelbree**<sup>®</sup> ONCE-A-DAY  
viloxazine  
extended-release capsules

symptom reduction that is

achievable



## Qelbree—a nonstimulant ADHD treatment that works!

### Qelbree is a treatment backed by savings and support programs



Qelbree can be conveniently refilled without a new prescription each month.



Download a copay card at [Qelbree.com](http://Qelbree.com), or scan here.



Commercially insured patients may pay as little as \$20 per prescription.\*

\*Terms and conditions apply.



Talk to your child's doctor about requesting a sample of **Qelbree**. You can make this request in person at your doctor's office or during a virtual telehealth appointment.

#### IMPORTANT SAFETY INFORMATION

**Qelbree can increase blood pressure and heart rate.** Your or your child's doctor will monitor these vital signs.

Please see full [Important Safety Information](#) on pages 6 and 7.



We're here to support you!



#### Have a question?

Find a single point of contact with Supernus Support and get help with any of the following:

- Ways to save on **Qelbree**
- Medication access
- Insurance coverage for **Qelbree**



Join **Qelbree Insider** at [Qelbree.com/sign-up](http://Qelbree.com/sign-up).

This ongoing program delivers updates on **Qelbree**, helpful resources, and personalized tips for managing your child's treatment.

Connect with the **Qelbree** community



helping make treatment

*affordable*

**Qelbree** ONCE-A-DAY  
viloxazine  
extended-release capsules

For children and teens with ADHD  
6 years of age and older

# Talk to your healthcare provider about Qelbree—a nonstimulant ADHD treatment that works!



**Qelbree** is a once-a-day treatment that offers rapid- and extended-release, full-day medication coverage that can be sprinkled or swallowed whole.



**Qelbree** is proven in medical studies to effectively and safely\* help reduce ADHD symptoms in children and teens 6 years and older.

\*Important: Monitor for mood or behavior changes. Your child's doctor should also monitor for changes in blood pressure and heart rate.



**Qelbree** is not a stimulant; there is no evidence of abuse.



**Qelbree** can be conveniently prescribed by a healthcare provider via telehealth without the need for a new prescription each month for medication refills.

## IMPORTANT SAFETY INFORMATION

**Qelbree may increase suicidal thoughts and actions, in children and adults with ADHD, especially within the first few months of treatment or when the dose is changed. Tell your doctor if you or your child have (or if there is a family history of) suicidal thoughts or actions before starting Qelbree. Monitor your or your child's moods, behaviors, thoughts, and feelings during treatment with Qelbree. Report any new or sudden changes in these symptoms right away.**

Please see full [Important Safety Information](#) on pages 6 and 7.



Qelbree is a registered trademark of Supernus Pharmaceuticals, Inc.  
All other trademarks are property of their respective owners.  
©2024 Supernus Pharmaceuticals, Inc. All rights reserved. QBE.2024-0156

